



2021 PRODUCT CATALOG

Seamlessly incorporate K-Tec's Line of Purpose-Built
Earthmoving Equipment into your fleet for a #MassiveAdvantage







MESSAGE	04 - 05
OUR HISTORY & MISSION	06 - 09
THE K-TEC ADVANTAGE	10 - 13
SOIL TYPES & JOB SITES	14 - 15
ADT SCRAPERS	16 - 25
POWER UNITS & HITCHES	26 - 27
EJB - EJECTOR BOX	28 - 29
LAND LEVELERS	30 - 35
EST - EARTHMOVING SUPPORT TRACTOR	36 - 41
ASHLAND CONSTRUCTION DISCS	42 - 43
TRUSTED TESTIMONIALS	44 - 45
DLL FINANCING	46 - 47
PARTS & SERVICE	48 - 49
SCRAPER OPTIONS	50 - 53
SPECIFICATION SHEETS	54 - 57



A MESSAGE FROM OUR FOUNDER

We sincerely believe that we have developed the most profitable and productive way to move dirt. We are committed to continuous improvement and innovations that will help you increase your profits and productivity well into the future.

"Dirt moving was, and is, in my blood."

KEN REMPEL
FOUNDER

Ken's home farm and the birthplace of K-Tec.
Rosenort, Manitoba, Canada





The first K-Tec Scraper manufactured

HISTORY

Earthmoving allows for mountains to be moved and landscapes to be transformed by hardworking contractors and equipment operators. There was a time when earthmoving lost all enjoyment. Equipment kept getting stuck and the constant breakdown of machinery caused too much downtime. Operators faced the ongoing chore of machine maintenance and finding grease points, while the capacity and cycle time of equipment was not high enough to be profitable or productive.

Along came K-Tec founder Ken Rempel who grew up on a farm and owned a construction and dirt moving company in the Red River Valley. Ken was not satisfied with the production capabilities of the scrapers on the market at that time.

A fresh solution arrived in the winter of 2000 when the first K-Tec scraper was manufactured. K-Tec meticulously used earthmoving expertise and design intuition to create a durable, lightweight, purpose-built, high capacity, minimal maintenance scraper that became the ideal solution in Red River Valley gumbo clay.

Today, earthmoving is again enjoyable, and a massive advantage can be gained by incorporating K-Tec into your equipment fleet.

MEET OUR EXECUTIVES

On behalf of the K-Tec executive team I would like to take this opportunity to thank you for your interest in our product offering. We, along with our full complement of employees, are very proud of the quality of our products and look forward to helping you transform landscapes in the most efficient and cost-effective manner possible. We believe that our quality, service, and value are second to none; and are confident that once you try one of our products you will be a K-Tec customer for life.

MIKHAIL 'MIKE' PALITSKY
PRESIDENT & CEO



MIKE PALITSKY
PRESIDENT & CEO



JIM McCORMICK
CHIEF FINANCIAL OFFICER



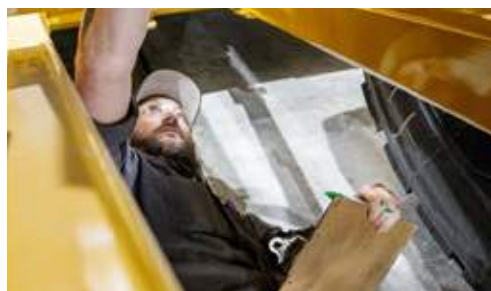
KELLY GOOSSEN
SENIOR EXECUTIVE VP OF SALES



MAT KLASSEN
CHIEF OPERATING OFFICER

THE COMPANY

At K-Tec Earthmovers, we believe in providing quality equipment to all our customers. We understand that prompt and professional service is essential to maintaining customer satisfaction. With this in mind, we are committed to creating a service network that is second to none. Ultimately, we believe that our quality workmanship will stand the test of time.



OUR MISSION

“ Uniting our family as the global provider of innovative solutions to transform landscapes ”

K-Tec and Ashland have merged to help you do massively more. Together we offer the broadest product line of earthmoving scrapers in the industry with the largest geographic footprint of dealers in the United States to provide exceptional service coverage. Our vision is that together we are shaping our world for a better tomorrow.



SHAPING OUR WORLD FOR A BETTER TOMORROW

K-TEC VERSUS THE REST

There are a number of considerations to think about when choosing your next earthmoving equipment rental or purchase. When a contractor is considering a job, the four main dirt moving options are as follows:

Below figures are for comparison purposes only. Results may vary.

	K-Tec Scraper	Pull Pan Scraper	Excavator, ADTs & Dozer	Motor Scraper
Heaped Capacity	● 28-74 cubic yards (21-56 m ³)	● 18-42 cubic yards (13-32 m ³)	● 20-44 cubic yards (15-34 m ³)	● 24-44 cubic yards (18-34 m ³)
Labor	● 1 Operator	● 1 Operator	● 4 Operators	● 1 Operator
Avg. Fuel Efficiency	● 1 Engine / 14 GPH (53 LPH)	● 1 Engine / 15 GPH (56 LPH)	● 4 Engines / 25 GPH (94 LPH)	● 2 Engines / 22 GPH (83 LPH)
Flotation	● 10 Tires Spread Evenly	● 8-12 Tires Spread Evenly	● 6 Tires Same Path	● 4 Tires Same Path



FUEL EFFICIENCY

Typically, motor scrapers are not very fuel efficient. With an excavator, rock trucks and dozer, 4 pieces of equipment need 4 engines. K-Tec saves you fuel costs by pulling our scrapers behind a single truck with a fuel consumption average of 14 GPH (53 LPH).



LESS LABOR

Only one operator's wages are needed for loading, transporting and ejecting up to 74 cubic yards (56 m³) in a single pass. Operator comfort naturally increases productivity over the course of the day.

Average loading times are 30-45 seconds and haul road speeds are 35+ MPH (50+ KMH) which results in faster cycle times.

ADT conversion allows for an idle dump truck to be transformed into a versatile scraper hauler and all modifications are 100% reversible.



RETURN ON INVESTMENT

At K-Tec, we ensure you get the best return on your investment. It is a known fact that, when possible, the use of a scraper to move dirt is the most cost-effective option. Use our cost analysis tool and compare the price of a K-Tec investment to that of our competitors at www.ktec.com.

Below figures are for comparison purposes only. Results may vary.

	K-Tec Scraper	Pull Pan Scraper	Excavator, ADTs & Dozer	Motor Scraper
Capital Cost	Medium	Low	High	High
Operating Cost	Low	Medium	High	High
Resale Value	High	Low	Medium	Medium
Longevity	High	Medium	Medium	High
Productivity vs K-Tec	N/A	-15%	-25%	-15%

CAPACITY

Capacity has become a major factor on construction jobs. K-Tec builds the largest pull pan scraper on the market. By keeping costs low, it has enabled our customers to be superior in the industry.

FLOTATION

K-Tec scrapers excel in soft ground conditions. In comparison to traditional motor scrapers that only have 4 tires, the K-Tec / ADT combination has 10 tires spaced evenly across the machine, providing maximum flotation in underfoot conditions.



K-Tec's scraper configuration, ideal cutting edge design, and bowl dimensions are the ultimate in loading efficiency.

By utilizing 4 tires on the back, K-Tec is able to reduce rolling resistance and compact the smoothly ejected load of material.

LUBE TEC

Only 5 total grease points and greaseless bushings allowing an average of 1200 hours before replacement for minimal downtime, maximizing productivity.

THE K-TEC ADVANTAGE

K-Tec's purpose-built scrapers have superior durability. From the sweltering sand of Saudi Arabia to the high-altitude mines of the Andes Mountains, our scrapers are built to handle the harshest conditions on the planet. K-Tec scrapers require minimal maintenance with sensational serviceability, backed by a 3-year

structural warranty* for peace of mind and maximum uptime. K-Tec's Massive Advantage becomes apparent when contractors witness these impressive earthmovers working in their own material more efficiently than they could have ever imagined.

*Terms and conditions apply, contact K-Tec for details.

TENSILE TEC

Using Hardox, Weldox steel technologies allows K-Tec to build stronger and lighter scrapers than competitors.



LOAD TEC

K-Tec developed a gooseneck hitch pole and quick attach hookup allowing 30% of the scraper's load weight to be transferred directly to the point where the truck is designed to carry weight.

CUSHION RIDE

Automatic Cushion Ride System offers a smoother ride and reduces damage to equipment.



**3 YEAR
STRUCTURAL**

**6 MONTH
PARTS & LABOR**

WARRANTY

Our durable groundbreaking scrapers are backed by a 3-year structural warranty*. Our confidence in high tensile steel provides security for your earthmoving investment.

CONTAINER SHIPPING

Several K-Tec scraper models have an innovative bolt-together design for convenient overseas shipping, which allows an entire K-Tec scraper to ship in a single 40 ft. high-cube container.



GPS LASER ADAPTABLE

K-Tec scrapers are GPS-ready for the efficient excavation and placement of bulk material to meet jobsite specifications.

SOIL TYPES

K-Tec scrapers have many uses for earthmoving projects across a variety of soil types. Our scrapers excel in each soil type application, including the following: Sand, Coal, Hardpan, Gypsum, Clay, Topsoil, Silt, Loam, Granite, Salt and more.



JOB SITES

At K-Tec, we understand that your earthmoving situation is unique. K-Tec strives to provide innovative earthmoving solutions for any application. We listen to your needs and present custom options to get the job done right. K-Tec is flexible and willing to assess your custom earthmoving needs. K-Tec's scrapers have been instrumental in transforming landscapes globally, improving quality of life in the following work applications:



SITE PREPARATION

- Commercial & Residential Developments
- Ranch Acreages
- Cattle Feedlots
- Oil Field Preparation
- Military Weapon Ranges
- Warehouse Distribution & Data Center Foundations
- Factory & Campus Foundations

LAND TRANSFORMATION

- Wildlife Reserves
- Creation of Levees for Flood Protection
- Golf Course Development
- Landfill Development
- Solar Fields & Wind Farms

ROAD BUILDING

- Interstate Highway Expansions & Repair
- Suburban Residential Roads
- Access, Service & Haul Roads
- Airport Runway Expansions



AGRICULTURE

Stripping Topsoil
 Precision Ditch Drainage
 Precision Land Leveling
 Barn Lagoons
 Retention Ponds
 Shrimp Ponds



MINING

Stripping Overburden
 Mine Reclamation
 Haul Road Smoothing
 Gold, Lithium, Potash,
 Aggregate, Clay &
 Bauxite Mining
 Transporting Gypsum
 Rock for processing
 Salt Mining



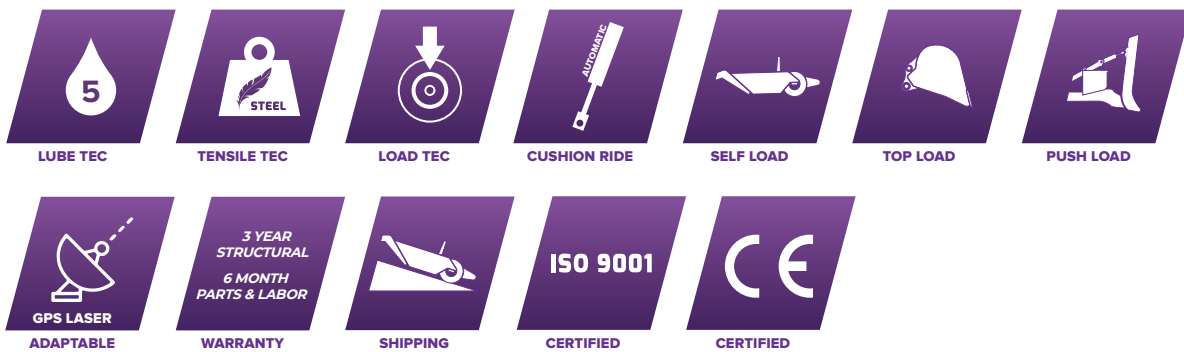
COAL PROCESSING

Coal Gob
 Coal Fines
 Coal Fly Ash
 Raw Coal

K-TEC 1228 ADT

The K-Tec 1228 ADT is a mighty machine with nimble maneuverability. K-Tec's lowest cost ADT scraper, provides high production on smaller job sites with tough conditions. The solid-welded, rigid-frame 1228 ADT carries a heaped capacity of 28 cubic yards / 21.4 cubic metres. The 1228 ADT is an attractive choice for contractors to transform older or idle 25 to 35 ton ADT's in their fleet into efficient and versatile scraper haulers.

K-TEC SCRAPER FEATURES



GENERAL SPECIFICATIONS

Specifications	Imperial	Metric
Heaped Capacity (ISO)	28 cubic yards	21.4 cubic metres
Struck Capacity	18.5 cubic yards	14.1 cubic metres
Max Load Rating	68,000 lb	30,844 kg
Bucket Dimensions	12' W x 4' H x 11' L	3.66 m W x 1.22 m H x 3.35 m L

Transportation Dimensions	Imperial	Metric
Overall Width	14'	4.27 m
Overall Height	9' 1"	2.77 m
Overall Length	34' 7"	10.55 m
Shipping Weight	32,861 lb	14,906 kg

See complete detailed specifications on pages 54 + 55



GALLERY



TOPSOIL • DENMARK



CLAY • TEXAS



SAND • TEXAS

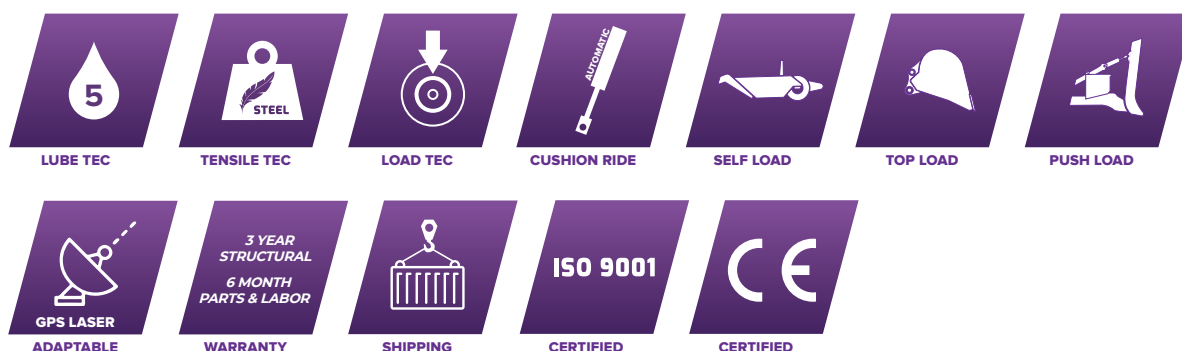


TOPSOIL • ENGLAND

K-TEC 1237 ADT

The K-Tec 1237 ADT is a ruggedly versatile earthmover, making it K-Tec's most popular ADT scraper favored for equipment fleets. The modular 1237 ADT scraper's bolt-together design allows for affordable international container shipment and simple maintenance. This fast, strong, multi-purpose machine, carrying a heaped capacity of 37 cubic yards / 28.3 cubic metres, is a powerful worker in any soil condition or job site application.

K-TEC SCRAPER FEATURES



GENERAL SPECIFICATIONS

Specifications	Imperial	Metric
Heaped Capacity (ISO)	37 cubic yards	28.28 cubic metres
Struck Capacity	20.25 cubic yards	15.5 cubic metres
Max Load Rating	88,000 lb	39,916 kg
Bucket Dimensions	12' W x 4' 3" H x 12' 10" L	3.66 m W x 1.29 m H x 3.91 m L

Transportation Dimensions	Imperial	Metric
Overall Width	14'	4.27 m
Overall Height	10'	3.04 m
Overall Length	36' 6"	11.13 m
Shipping Weight	39,308 lb	17,830 kg

See complete detailed specifications on pages 54 + 55



GALLERY



SAND • TEXAS



CLAY • JAPAN



TOPSOIL • AUSTRALIA

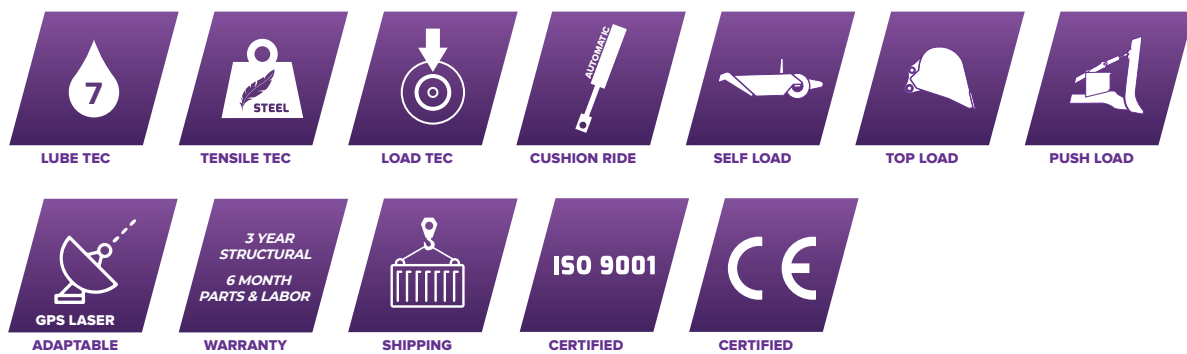


SAND • TEXAS

K-TEC 1243 ADT

When a job with long haul roads requires larger capacity, the K-Tec 1243 ADT excels, even in the toughest conditions. The 1243 ADT scraper's bolt-together design allows for affordable international container shipping and simple maintenance. While proficient in self-loading, the standard roller push block on the back of the scraper is smoothly matched for push support loading for swift cycle times of the 43 cubic yard / 33 cubic metre heaped capacity scraper.

K-TEC SCRAPER FEATURES



GENERAL SPECIFICATIONS

Specifications	Imperial	Metric
Heaped Capacity (ISO)	43 cubic yards	32.9 cubic metres
Struck Capacity	25.7 cubic yards	19.6 cubic metres
Max Load Rating	103,200 lb	46,810 kg
Bucket Dimensions	12' W x 5' H x 13' 5" L	3.66 m W x 1.52 m H x 4.09 m L

Transportation Dimensions	Imperial	Metric
Overall Width	14'	4.27 m
Overall Height	10' 11"	3.34 m
Overall Length	40' 2"	12.25 m
Shipping Weight	49,450 lb	22,430 kg

See complete detailed specifications on pages 54 + 55



GALLERY



SAND • ILLINOIS



TOPSOIL • TEXAS



ROCK • AUSTRALIA

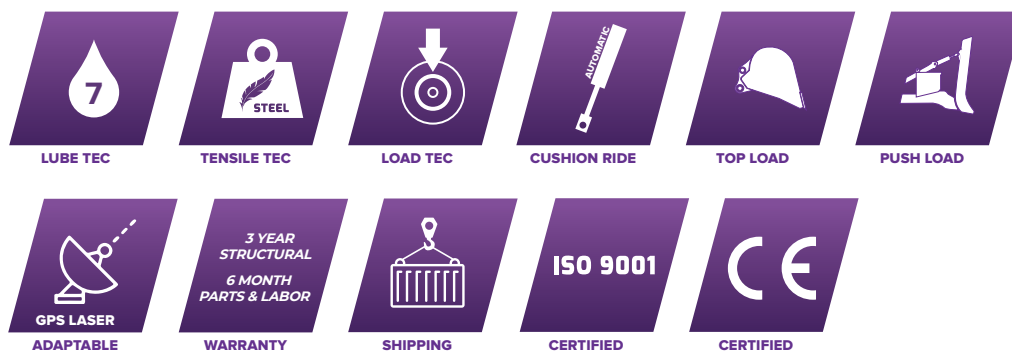


TOPSOIL • TEXAS

K-TEC 1263 ADT

K-Tec's 1263 ADT is the world's largest pull-pan scraper. This mega scraper is a mover of millions, made for niche long haul massive earthmoving projects. The ultra-high capacity 1263 ADT scraper's bolt-together design allows for simple maintenance and affordable international container shipping. The standard roller push block on the back of the scraper is smoothly matched for push support loading for swift cycle times of the 63 cubic yard / 48.1 cubic metre heaped capacity scraper.

K-TEC SCRAPER FEATURES



GENERAL SPECIFICATIONS

Specifications	Imperial	Metric
Heaped Capacity (ISO)	63 cubic yards	48.2 cubic metres
Struck Capacity	41.3 cubic yards	31.56 cubic metres
Max Load Rating	151,200 lb	68,583 kg
Bucket Dimensions	12' W x 7' H x 15' 11" L	3.66 m W x 2.13 m H x 4.85 m L

Transportation Dimensions	Imperial	Metric
Overall Width	14'	4.27 m
Overall Height	10' 4"	3.15 m
Overall Length	44'	13.4 m
Shipping Weight	61,000 lb	27,700 kg

See complete detailed specifications on pages 54 + 55



GALLERY



TOPSOIL • NEBRASKA



TOPSOIL • OKLAHOMA



CLAY • KANSAS

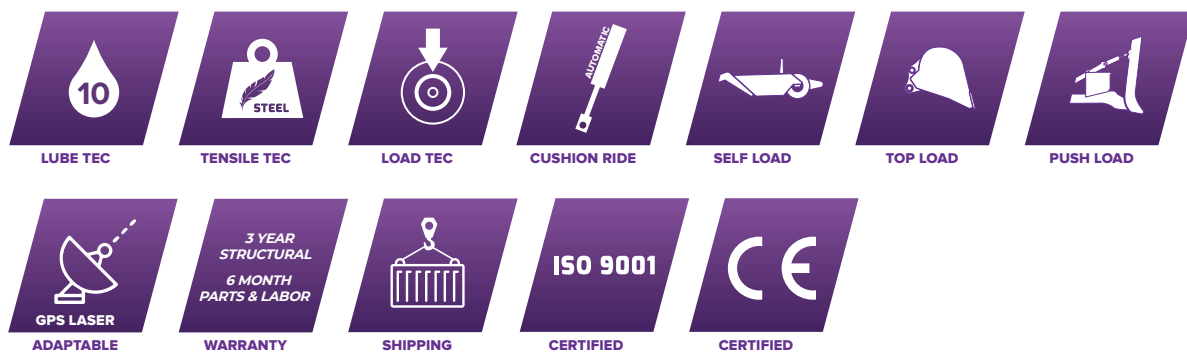


KILN DUST • MICHIGAN

K-TEC 1237 ADT TRAIN

The K-Tec 1237 ADT Train doubles efficiency by pulling two 1237 scrapers with a single power unit and one operator. On job sites with longer cut-zone and haul road areas, a massive advantage is gained to provide a tandem heaped capacity of 74 cubic yards / 56.6 cubic metres. The 1237 ADT Train provides impressive production performance at the end of the day. This configuration has an added advantage since it can split into singles on your job site as conditions change.

K-TEC SCRAPER FEATURES



GENERAL SPECIFICATIONS

Specifications	Imperial	Metric
Heaped Capacity (ISO)	74 cubic yards	56.57 cubic metres
Struck Capacity	40.5 cubic yards	30.9 cubic metres
Max Load Rating	176,000 lb	79,832 kg
Bucket Dimensions	12' W x 4' 3" H x 12' 10" L	3.66 m W x 1.29 m H x 3.91 m L

Transportation Dimensions	Imperial	Metric
Overall Width	14'	4.27 m
Overall Height	11' 10" / 10'	3.4 m / 3.04 m
Overall Length	36' 6" / 36' 6"	11.13 m / 11.13 m
Shipping Weight	41,751 lb / 39,308 lb	18,938 kg / 17,830 kg

See complete detailed specifications on pages 54 + 55



GALLERY



GRANITE • WYOMING



TOPSOIL • CANADA



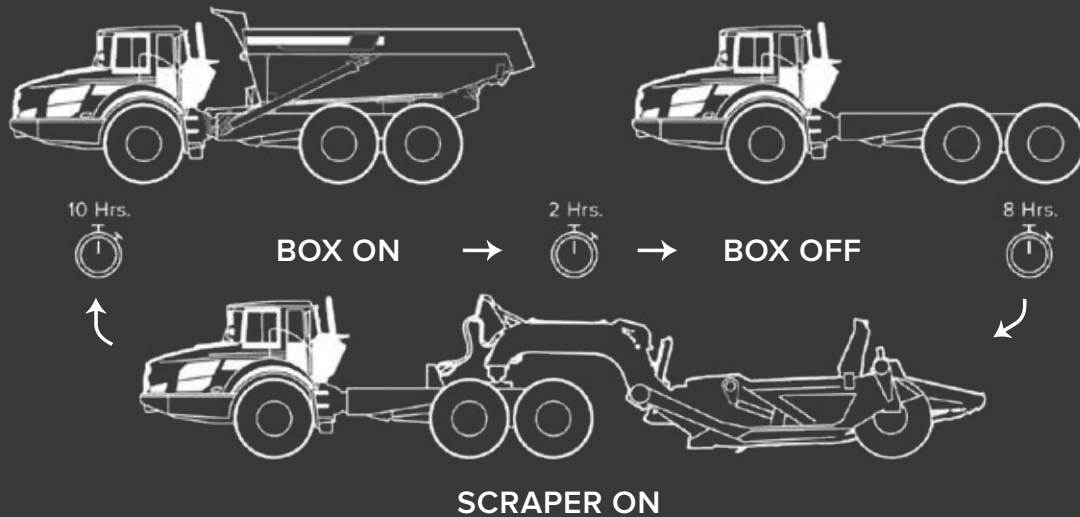
TOPSOIL • TENNESSEE



SALT • UTAH

CONVERSION PROCESS

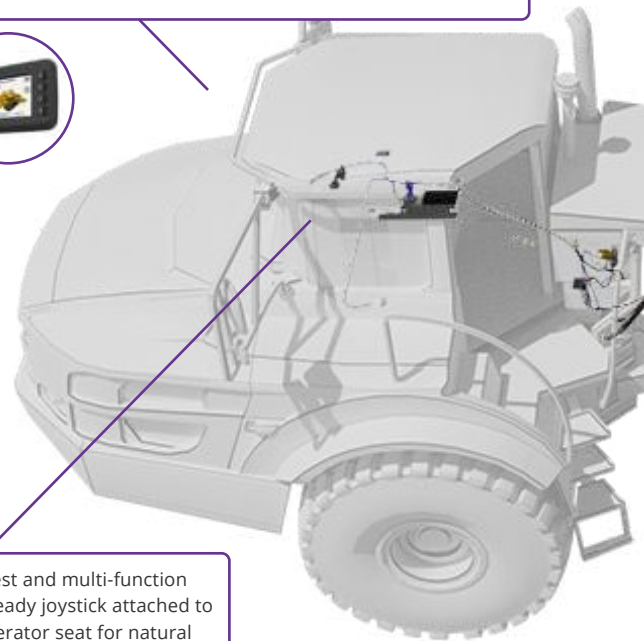
The ADT conversion from Dump Box to Scraper Hauler is simple and effective. All modifications done to convert the truck are 100% reversible, as there are no permanent modifications made to the Articulated Dump Truck. If at a later time contractors have a heavy rock project, or decide they want to sell the dump truck, they can easily switch back to the dump-box configuration.



ADT HITCHES

The K-Tec Articulated Dump Truck Hitch is an intricate system of steel, hydraulic, and electrical assemblies that transfers 30% of the scraper weight to the truck. The intelligent programming and in-cab comforts will improve operator performance for enhanced productivity. A full breakdown of the K-Tec ADT Hitch system is as follows:

5" ELS Touch Display Screen featuring: hydraulic PSI indicators, automatic eject settings, load count tracker, service alerts, hours meter and troubleshooting diagnostics tool.



Padded armrest and multi-function GPS-control-ready joystick attached to the truck's operator seat for natural comfort.

POWER UNITS

K-Tec scrapers may be pulled behind a wide variety of power unit models. Since K-Tec isn't exclusive to a single power unit manufacturer, contractors can convert their existing fleet of units to pull K-Tec earthmovers. Listed below are most of the power unit manufacturers for which K-Tec provides custom-made hitches.



VOLVO



CATERPILLAR



TEREX



JOHN DEERE



BELL



CASE



DOOSAN



KOMATSU

Hydraulic filters to prevent cross-contamination between scraper and truck. Hydraulic Valve, Couplers, Hoses to connect the scraper to the truck.

The fastest hooking and unhooking in the industry.

Fender System to protect truck from material flinging from tires.

Custom Bracketry to fit the specific Articulated Dump Truck Model.

Truck Chassis Catwalk System for easy access steps and platform for maintenance on hydraulic system.

EJB - EJECTOR BOX NEW

K-Tec's innovative Ejector Box (EJB) has a payload capacity of 43 US Short Tons (39 Tonnes) and fits on Volvo A40 and A45 ADT's. The EJB allows for trucks to safely eject loaded material in areas with reduced overhead clearance. The K-Tec EJB's patent-pending, bolt-together design makes for affordable overseas shipments.

K-TEC EJECTOR BODY FEATURES



GENERAL SPECIFICATIONS

Specifications	EJB 3X		EJB 4X	
Heaped Capacity (ISO)	31 sh tn / 23 yd ³	28 Tonnes / 17.5 m ³	43 sh tn / 32 yd ³	39 Tonnes / 24.4 m ³
Max Load Rating	61,729 lb	28,000 kg	86,421 lb	39,200 kg
Telescopic Cylinder Dimensions	13' 10" Stroke	4.21 m Stroke	15' 1" Stroke	4.59 m Stroke
Tailgate Cylinders Dimensions	4" x 10" Stroke	101 mm x 254 mm	4" x 10" Stroke	101 mm x 254 mm
Eject Time Loaded	12-14 Seconds	12-14 Seconds	12-14 Seconds	12-14 Seconds
Retract Time Empty	16-18 Seconds	16-18 Seconds	16-18 Seconds	16-18 Seconds
Mudflaps	Standard	Standard	Standard	Standard
Bolt-Together Design	Standard	Standard	Standard	Standard
Payload Weighing	Standard	Standard	Standard	Standard
Top Tail Gate	Optional	Optional	Optional	Optional
Sideboard	Optional	Optional	Optional	Optional

Transportation Measures	EJB 3X		EJB 4X	
Overall Width	9' 6"	2.9 m	11' 2"	3.4 m
Overall Length	18'	5.48 m	19' 7"	5.98 m
Overall Height	6' 2"	1.9 m	6' 11"	2.1 m
Overall Weight	12,418 lb	5,633 kg	15,075 lb	6,838 kg



GALLERY



SAFE MOVING UNLOAD



4 STAGE CYLINDER



GRANITE • WYOMING



GRANITE • WYOMING

*Pre-production model shown.
EJB4X limited market release March 2021.
EJB4X and EJB3X production release mid-2021.

LAND LEVELERS

Our heavy duty box scrapers thrive in construction and agricultural industries. Our land levelers are intentionally designed for excellence in maintaining haul roads, precision leveling, and field drainage. K-Tec Land Levelers incorporate a folding hitch pole that converts the leveler to legal road width compliance when transporting between job sites.

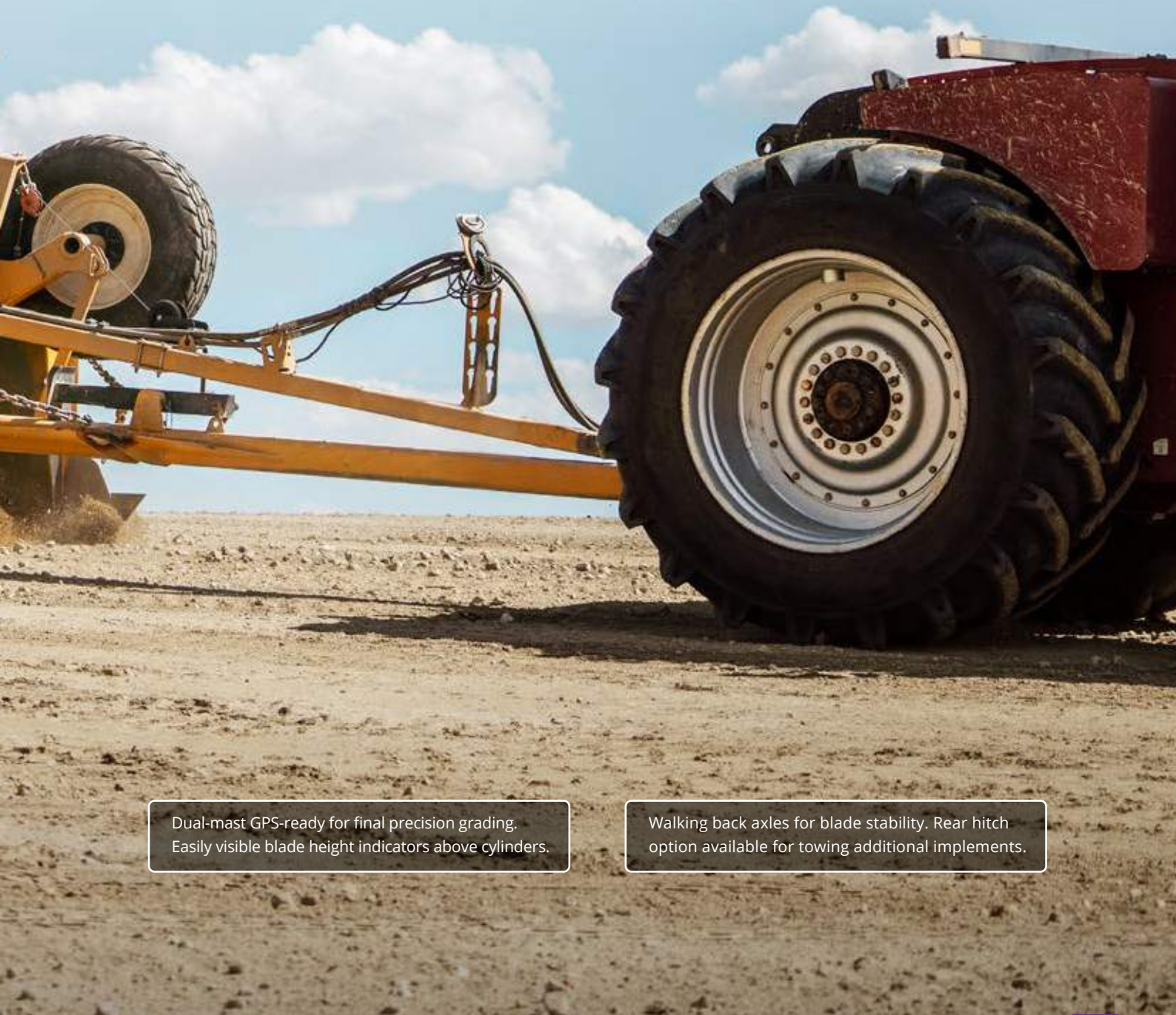


A folding hitch pole for legal road transportation between job sites.

Standard tilt functionality with 30" / 762 mm of lift at cutting edge, which is ideal for slopes and crowning.

	K-Tec Leveler	Motor Grader
Capacity	11 - 22 cubic yards (8.4 - 16.8 cubic metres)	Up to 5 cubic yards (3.8 cubic metres)
Labor	Entry Level	Highly Skilled
Avg. Fuel Efficiency	6-10 GPH (22-38 LPH)	4-8 GPH (15-30 LPH)
Transport Width	8' 6" - 10' 5" (2.6 m - 3.2 m)	8' 2" - 14' (2.4 m - 4.3 m)
Cutting Width	14 - 28' (4.3 m - 8.5 m)	12 - 24' (3.6 m - 7.3 m)
Capital Cost	Medium	High

Above figures are for comparison purposes only. Results may vary.



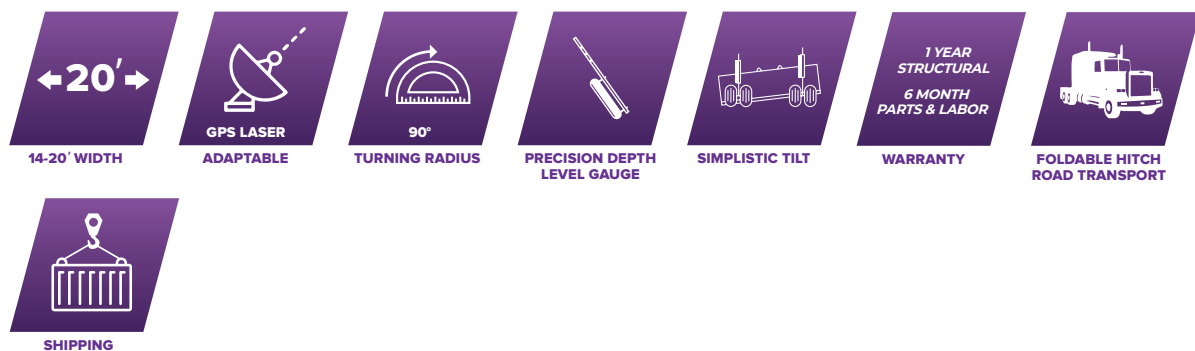
Dual-mast GPS-ready for final precision grading.
Easily visible blade height indicators above cylinders.

Walking back axles for blade stability. Rear hitch
option available for towing additional implements.

CONSTRUCTION LEVELERS

K-Tec Land Levelers have the largest drag capacity on the market. K-Tec's Land Levelers help contractors score a perfect grade on construction haul roads with these effective machines. A smooth haul road allows for faster cycle times and less structural damage to equipment. K-Tec construction levelers range from 14' to 20' / 4.2 m to 6 m widths and can drag between 11 - 16 cubic yards / 8.4 - 12.2 cubic metres.

K-TEC LAND LEVELER FEATURES



GENERAL SPECIFICATIONS

Model	Bucket Dimensions		Capacity	
1411 Flex	14' W x 5' 1" H x 4' 7" L	4.26 m W x 1.5 m H x 1.4 m L	11.4 cubic yards	8.7 cubic metres
1613 Flex	16' W x 5' 1" H x 4' 7" L	4.9 m W x 1.5 m H x 1.4 m L	13 cubic yards	10 cubic metres
1814 Flex	18' W x 5' 1" H x 4' 7" L	5.4 m W x 1.5 m H x 1.4 m L	14.6 cubic yards	11.1 cubic metres
2016 Flex	20' W x 5' 1" H x 4' 7" L	6.1 m W x 1.5 m H x 1.4 m L	16.3 cubic yards	12.5 cubic metres

Model	Overall Width & Length		Shipping Weight	
1411 Flex	14' 3" W x 25' L	4.34 m W x 7.62 m L	10,200 lb	4,626 kg
1613 Flex	16' 3" W x 25' L	4.95 m W x 7.62 m L	10,670 lb	4,839 kg
1814 Flex	18' 3" W x 25' L	5.56 m W x 7.62 m L	11,128 lb	5,047 kg
2016 Flex	20' 3" W x 25' L	6.17 m W x 7.62 m L	11,594 lb	5,258 kg

See complete detailed specifications on pages 56 + 57



GALLERY



ROAD TRANSPORT



TOPSOIL • CANADA



TOPSOIL • WYOMING

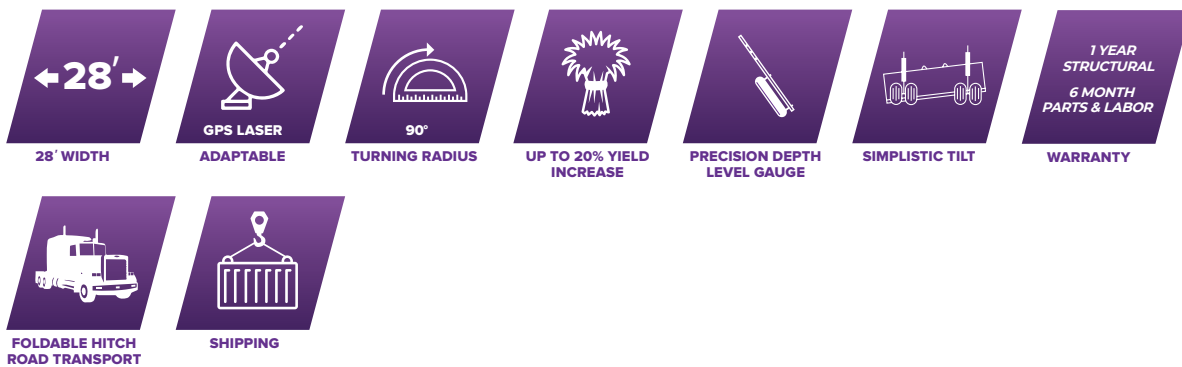


TOPSOIL • WYOMING

AGRICULTURE LEVELER

K-Tec's 2822 FX Land Leveler is the finest agriculture field leveler. Scientific studies have proven that a properly leveled field can produce up to 20% yield improvements. The K-Tec 2822 FX is a field leveler's dream, as the drag scraper transforms from horizontal field to vertical road orientation to allow for driving the machine between fields. K-Tec's 2822 FX Leveler is 28' / 8.5 m wide and can drag up to 22 cubic yards / 16.8 cubic metres to fill in any low spots on a field.

K-TEC 2822 FLEX LAND LEVELER FEATURES



GENERAL SPECIFICATIONS

Specifications	Imperial	Metric
Bucket Dimensions	28' W x 5' 1" H x 4' 7" L	8.5 m W x 1.55 m H x 1.4 m L
Capacity	22.8 cubic yards	17.4 cubic metres
Cutting Width	28'	8.53 m
Foldable Hitch	Standard	Standard

Transportation Dimensions	Imperial	Metric
Overall Width	28' 8"	8.61 m
Overall Length	31' 3"	9.52 m
Folded Transportation Dimensions	10' 5" W x 10' 7" H x 35' L	3.1 m W x 3.22 m H x 10.7 m L
Shipping Weight	21,354 lb	9,686 kg

See complete detailed specifications on pages 56 + 57



GALLERY



TOPSOIL • CANADA



TOPSOIL • ARKANSAS



TOPSOIL • AUSTRALIA

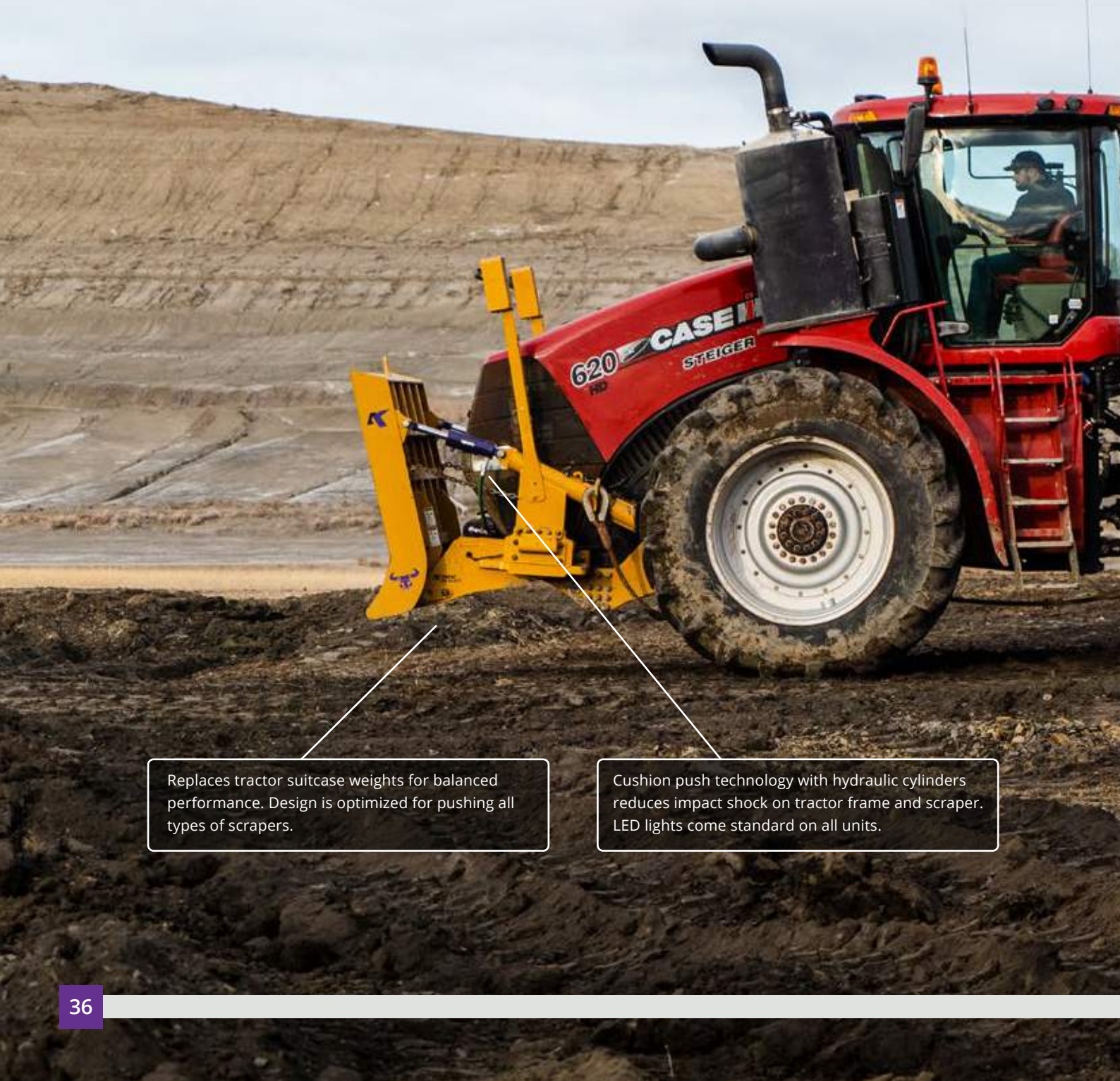


TOPSOIL • CANADA

EST - EARTHMOVING SUPPORT TRACTOR

The Earthmoving Support Tractor (EST) consists of a tractor with a K-Tec Ox Block and a K-Tec Tricerabox. This combination is bringing a cost-effective solution to push assisting scrapers as well as maintaining job site productivity.

Contractors who are looking to gain a massive advantage over their competition should investigate these effective K-Tec attachments for an ideal piece of support equipment to enhance their earthmoving success.



Replaces tractor suitcase weights for balanced performance. Design is optimized for pushing all types of scrapers.

Cushion push technology with hydraulic cylinders reduces impact shock on tractor frame and scraper. LED lights come standard on all units.

	K-Tec EST	Dozer
Undercarriage Costs	Low	High
Capital Cost	Medium	High
Labor	1 Operator	1 Operator
Avg. Fuel Efficiency	1 Engine / 10-12 GPH (37.8-45.4 LPH)	1 Engine / 15-18 GPH (56.7-68.1 LPH)
Cycle Time	Fast Cut Zone Positioning	Slower Speeds
Horsepower	350-620 HP (261-462 kW)	350 HP (261 kW)
Push Block Width	7' 2" (2.2 m) Ox Block	13'+ (4 m+) More susceptible to tire damage
Ground Blade Width	14' (4.3 m) Tricerabox	13'+ (4 m+) Dozer Blade

Above figures are for comparison purposes only. Results may vary.



K-Tec EST rear implement options include: Tricerabox, Land Leveler, Direct Mount Scraper, and Ag Receiver

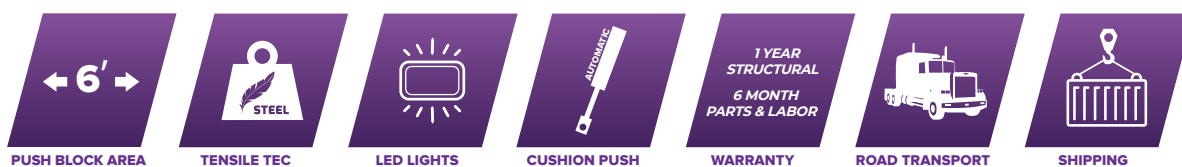
3-point hitch integration on the back of the tractor allows for smooth operator control of the box blade. Integrated scraper hitch option allows for EST to replace a power unit down for maintenance.

The 14 ft. / 4.3 m wide front blade smooths out the tracks of the tractor, while 7 ripper shanks can engage the ground for scarifying hard ground or aerating wet soil.

K-TEC OX BLOCK

On the front of the EST, the K-Tec Ox Block is a pusher block designed for push-loading scrapers for maximum capacity and decreased time in the cut zone, which improves productivity. Comparing the Ox Block to the dozer, the contractor will see increased fuel efficiency while reducing undercarriage costs by a minimum of 50%, and obtaining substantially higher speeds in the cut zone.

K-TEC OX BLOCK FEATURES



GENERAL SPECIFICATIONS

Specifications	Imperial	Metric
Block Dimensions	7' 2" W x 5' 5" H	2.2 m W x 1.65 m H
Cushion-Push Technology	Standard	Standard
LED Lights	Standard	Standard

Transportation Dimensions	Imperial	Metric
Overall Width	7' 2"	2.18 m
Overall Length	7' 10"	2.4 m
Shipping Weight	5,820 lb	2,640 kg



GALLERY



TOPSOIL • NEBRASKA



SHALE • WYOMING



GRANITE • WYOMING

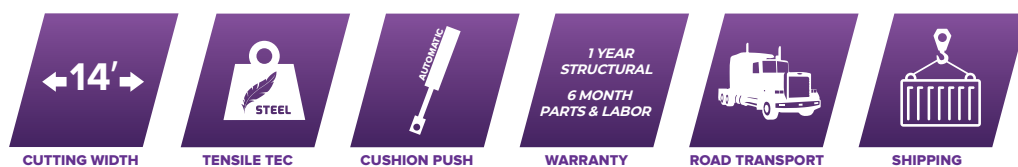


TOPSOIL • NEBRASKA

K-TEC TRICERABOX

The K-Tec Tricerabox is a 14'-wide box blade that is mounted to a 3-point hitch. The Tricerabox has a hydraulically-operated seven-shank ripper for breaking up hard soil or aerating wet job sites. The Tricerabox enables the operator to easily and effectively maintain cut and fill areas.

K-TEC TRICERABOX FEATURES



GENERAL SPECIFICATIONS

Specifications	Imperial	Metric
Front Drag Capacity	5 cubic yards	3.82 cubic metres
14' Wide Hinged Back Blade	Standard	Standard
7 Shank Ripper Teeth	Standard	Standard
Ripper Teeth Cutting Depth	17" Below Grade	432 mm Below Grade
Ripper Teeth Spacing	23"	584 mm

Transportation Dimensions	Imperial	Metric
Overall Width	13' 10"	4.22 m
Overall Length	6' 3"	1.91 m
Overall Height	6'	1.83 m
Shipping Weight	9,500 lb	4,309 kg



GALLERY



7 RIPPERS



SHALE • WYOMING



SHALE • WYOMING



TOPSOIL • KANSAS

CONSTRUCTION DISCS **NEW**

These heavy-duty wheeled offset disc harrows are specifically designed to operate effectively under difficult soil conditions in the construction industry. No matter what the task - land clearing, road building, reclamation projects, wet and dry soil blending - these disc harrows are built to handle it all.



CONSTRUCTION DISC FEATURES

- » Heavy-duty gang beams feature welded gang standards specifically designed for the oil bath gang bearings for long service life and less downtime in extreme conditions.
- » Heavy-duty steel rock guard plate protects the housing assembly.
- » Adjustable heavy duty disc mud scrapers
- » Rugged swivel front hitch for unlimited range of motion without binding
- » Adjustable gang angles (19,21,24 deg.) to accommodate any condition
- » 2 ½" diameter gang bolts with mechanical lock nuts on each end
- » Ductile cast spools provide additional weight centered over the bearings. This dramatically reduces bearing side loads when operating on uneven ground as compared to competitive models that put the weight high above the gang within the mainframe.
- » Self-leveling hitch
- » The extra weight of the cast spool placed within each gang system allows the mainframe to possess a lower profile than competitive models. This provides superior visibility when operating on established jobsites with utilities already in place. (fire hydrants, manholes, grade stakes)

HDW3217-12

Construction Disc

Offset 32" Diameter Blade
17 3/8" Spacer
12 Blades Front & Rear

WEIGHT: 9,592 lb.

TRACTOR HORSEPOWER: 200+

ROAD TRANSPORT WIDTH: 8' 4"

AVG. CUTTING FORCE PER BLADE: 799 lb



HDW3217-14

Construction Disc

Offset 32" Diameter Blade
17 3/8" Spacer
14 Blades Front & Rear

WEIGHT: 10,084 lb.

TRACTOR HORSEPOWER: 250+

ROAD TRANSPORT WIDTH: 9' 9"

AVG. CUTTING FORCE PER BLADE: 720 lb



EHDW3620-14

Construction Disc

Offset 36" Diameter Blade
20" Spacer
14 Blades Front & Rear

WEIGHT: 14,639 lb.

TRACTOR HORSEPOWER: 350+

ROAD TRANSPORT WIDTH: 11' 7"

AVG. CUTTING FORCE PER BLADE: 1,046 lb



EHDW4220-14

Construction Disc

Offset 42" Diameter Blade
20" Spacer
14 Blades Front & Rear

WEIGHT: 15,644 lb.

TRACTOR HORSEPOWER: 400+

ROAD TRANSPORT WIDTH: 11' 7"

AVG. CUTTING FORCE PER BLADE: 1,117 lb





DAVE OVERHOLT

SUPERINTENDENT

TRUCCO CONSTRUCTION

“We have seven K-Tec scrapers that are being pulled by Volvo trucks. With the full suspension trucks **the operators are not getting beat around and can run at high speeds and the ride is tremendous.** The sites we’re on can be very high in moisture so with the flotation of the K-Tec scrapers they ride up very well on the haul roads so it takes minimal maintenance with them.”

TRUSTED TESTIMONIALS



TAKEO ASAKURA

CHIEF EXECUTIVE OFFICER

JDC CORPORATION

“JDC had been seeking a scraper with high-speed performance to achieve a major breakthrough in large earthworks, and finally found that **K-Tec is the solution.** We are going to reinforce K-Tec’s performance in Japan and will expand it into Asian countries shortly.”



JOSH DOERHOFF

PROJECT PURSUIT MANAGER

EMERY SAPP & SONS

“Some of the advantages we really like with the K-Tec 1263 ADT scrapers and Volvo trucks is the overall size of the truck and pan, the horsepower it has, the overall speed that we can run efficient cycle times on. All of those roll into **being more effective when we have longer haul operations and they really shine on these long hauls carrying a big payload.**”



BRENT GREGORCZYK

SUPERINTENDENT

DALE LOWDEN EXCAVATING

“The K-Tec scrapers are designed really well, they have a door that pushes past the floor so we don’t have any problems with material hanging up, we don’t have any lag time with these pans and we’ve had a lot of success with them. **I don’t have any reason to use anything else at this point because I’m really happy with what we’ve got.**”



Financing with the DLL / K-Tec Program

The DLL/K-Tec program offers a wide range of financing and leasing programs designed to meet the various business needs of today's customer. Take a moment to review some of our most popular programs and call your dealer or DLL/K-Tec program representative for additional information.



To find out more about the benefits of acquiring your equipment through the DLL/K-Tec program, call 1-866-355-5438.



The flexibility and choice every business needs

1. Low rates

Special low rates available on new equipment. Competitive rates are also available on used equipment.

2. Hold on to your cash

You can acquire the equipment you need with virtually no cash outlay. In most cases, all you need is a small down payment, or in the case of a lease, one payment in advance.

3. Flexible leasing options

We structure all of our products to put you in control. At the end of your agreement you can choose to keep on leasing the same equipment, lease new equipment, or return the equipment. It's up to you. You make the choice.

4. Enjoy tax benefits

Depending on the type of finance product you select, your payments could be treated as a fully tax-deductible operating expense, or you may be able to claim accelerated depreciation of the equipment in addition to interest expense as deductible for tax purposes. And for many businesses that's a vital benefit.

5. It's quick and easy!

In most cases, just one phone call is all it takes to get the process started. Depending on the transaction size, credit approval can take place in the same day and if you have an existing line of credit, it's even faster.

PARTS & SERVICE

Servicing earthmoving equipment is important to extend the life of the machine. Order consumable parts or request support from our trained service technicians to maintain your scrapers and keep fleets running smoothly.

→ NEXT DAY AIR PARTS DELIVERY SERVICE

→ CUTTING EDGE BULK ORDER DISCOUNT

→ RECOMMENDED STOCK LIST

→ 24-HOUR SERVICE HOTLINE
+1 866 769 3787



K-TEC REMOTE PARTS KIT **NEW** MAXIMIZE FLEET UPTIME

The remote jobsite parts kit is fully customizable and built to carry all the necessary consumable scraper parts including cutting edges, bushings, and pins. The box also houses other key scraper components, such as cylinders, for quick replacement in order to limit downtime. Contractors may also order an optional variety of tools for new scraper setup and installation on the jobsite.





CERTIFIED PARTS

View our current selection of scraper hitch options to attach to your existing power unit on page 27. Contact our 24-hour service hot line at +1 866 769 3787 for information and assistance.



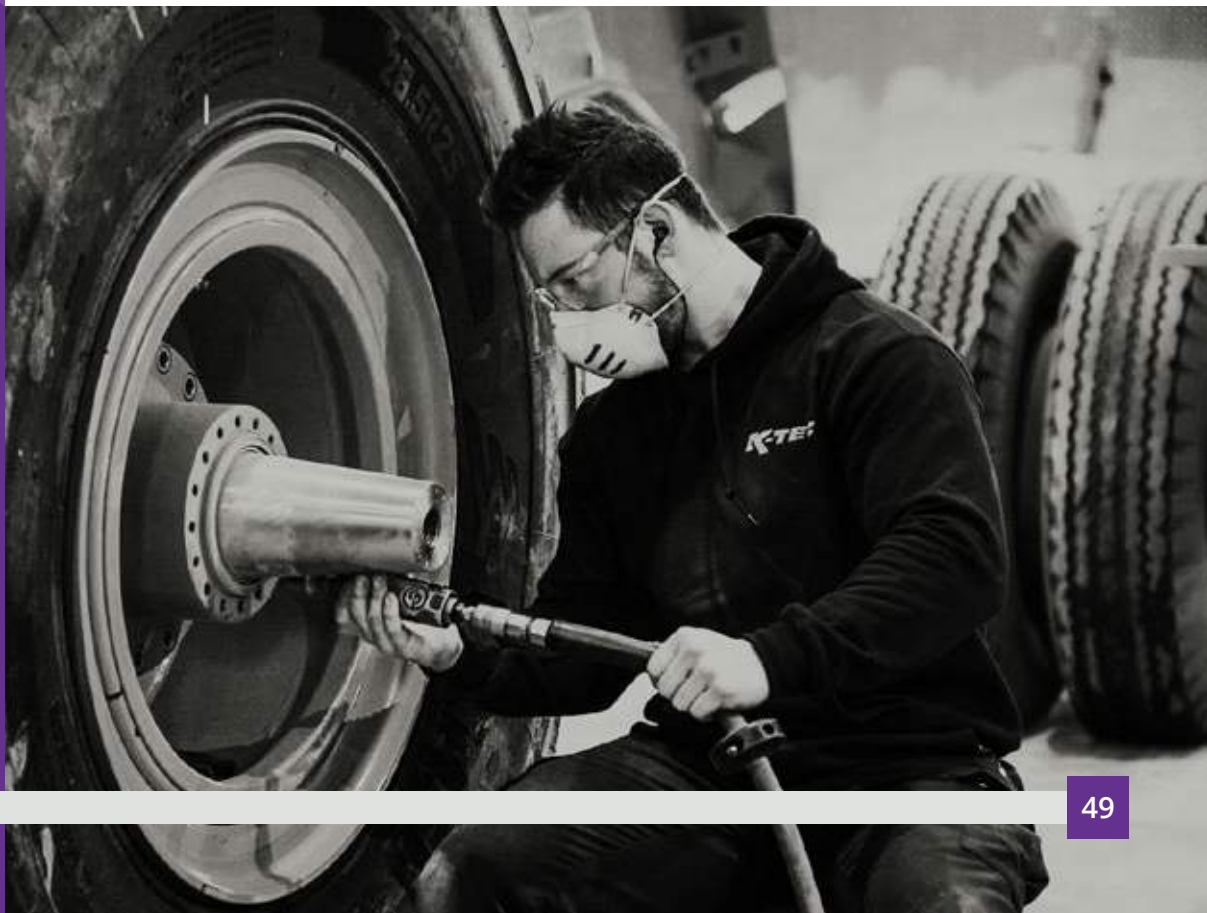
SERVICE

Ensure that your scraper operation maintains the proper pressure ratings, max load ratings, and haul road speeds as indicated on our tire pressure chart found on our website.



















WARRANTY

K-Tec Earthmovers are known in the industry for their groundbreaking durability, which is backed by a 3-year structural warranty. Our confidence in high tensile steel provides security for your earthmoving investment.






K-TEC SCRAPER OPTIONS

CUTTING EDGES & ROUTER BITS The cutting edges serve as ground-engaging blades to dig in to the earth. Selecting the proper blade configuration and profile increases job site efficiency as contractors can customize their scraper based on the material in which they are working.		1228 ADT	1237 ADT	1237 ADT Lead	1243 ADT	1263 ADT
	TAPERED DROP DOWN CENTER BIT The standard K-Tec center bit is ideal for most conditions and soil types.	✓	✓	✓	✓	✓
	NON TAPERED DROP DOWN CENTER BIT The aggressive profile is ideal for sandy conditions when maximum ground penetration is not as critical.	✓	✓	✓		
	SERRATED TAPERED DROP DOWN CENTER BIT The serrated center bit is best in hard conditions when maximum penetration is required to break up hard or slabby material.	✓	✓	✓	✓	✓
	FLAT PROFILE (FULL WIDTH) The flat straight profile achieves a smooth and precise finish.	✓	✓	✓	✓	✓
	SERRATED PROFILE (FULL WIDTH) The serrated straight blade increases ground penetration and assists in breaking up material.	✓	✓	✓	✓	✓
	AGGRESSIVE STAGGERED OPTION (FULL WIDTH) The staggered teeth sections assist in breaking up material and increase ground penetration.	✓	✓	✓	✓	✓
ROUTER BITS						
	STANDARD ROUTER BIT POSITION The standard router bit setting is for less aggressive cuts.	✓	✓	✓	✓	✓
	DROP DOWN ROUTER BIT POSITION Running a straight profile, the router bit position can further increase cut depth in the drop down position.	✓				
	TUNGSTEN COATED ROUTER BIT The tungsten coated router bits extend the life of blades in extremely abrasive wear conditions.	✓				
	CHOCKY BAR ROUTER BITS The chocky bar router bits protects sidewall wear in abrasive conditions and guide the material into the scraper bowl. Option is available in 1" or 2" thickness.	✓				

ADDITIONAL OPTIONS		1228 ADT	1237 ADT	1237 ADT Lead	1243 ADT	1263 ADT
	ROCK PICKS Rock picks assist in removing rocks from the scraper tires in rocky jobsite applications.	✓	✓	✓	✓	✓
	MUD SCRAPERS Mud scrapers assist in removing mud from the scraper tires in muddy jobsite conditions.	✓	✓	✓		
	HEIGHT GAUGE Provides the operator with a visual reference for rear scraper bowl height or cutting depth in train configuration.			✓		
	15" RACK EXTENSION The 15" rack extension increases the overall scraper load capacity and prevents material from falling back onto the lead hydraulics. Installed on top of standard K-Tec rack.		✓	✓		
	36" TRASH RACK The 36" trash rack extension increases the overall scraper load capacity and prevents slabby material from falling back onto the tires. Mounted to scraper bowl.	✓				
	LASER MOUNT EXTENSION Extension tube bracket bolted to the laser mount above the cutting edge for attaching laser or GPS mast equipment.	✓	✓	✓		
	4 CALIPER BRAKES The 4 caliper braking system provides additional security and control in steep uneven conditions.	✓	✓	✓	✓	✓
	MINE VERSION BOWL SKINS Reinforced heavier plate, wear-resistant Hardox steel floor for mining applications.				✓	✓

K-TEC SCRAPER OPTIONS

		1228 ADT	1237 ADT	1237 ADT Lead	1243 ADT	1263 ADT
SALT HARVESTING PACKAGE						
	Full Package The full salt harvesting package keeps fine material from leaking out of the bowl; tire mud flaps keep material from spraying; serrated profile blades are included; and corrosion preventative measures are taken for electrical wires.		✓	✓		
	Sidewall to Apron Filler Spacers Spacers prevent fine material loss, thus increasing load capacity and efficiency.		✓	✓		
	Apron Extensions Extended apron bottom edge closes gap between cutting edge and apron preventing fine material loss.		✓	✓		
	Additional Apron Stops Stops fill subtle gaps between scraper bowl and apron, keeping fine material in the bowl.		✓	✓		
	Additional Mud Flaps on Scraper and ADT Power Unit Fender Extension Fine material spray prevention increases machine longevity and exterior material buildup		✓	✓		
	Specialty Cutting Edge Configuration (Full Serrated profile)		✓	✓		

COMPATIBLE TIRES & GROUND PRESSURE SPECIFICATIONS		1228 ADT	1237 ADT	1237 ADT Lead	1243 ADT	1263 ADT
	23.5 R25 Tires 24-28 PSI 165-193 kPa					
	26.5 R25 Tires 26-30 PSI 179-206 kPa			32-36 PSI 220-248 kPa		
	29.5 R25 Tires 26-30 PSI 179-206 kPa				36-40 PSI 248-275 kPa	
	29.5 R29 Tires 22-26 PSI 151-179 kPa				36-40 PSI 248-275 kPa	
	24.00 R35 Tires 31-35 PSI 213-241 kPa				43-47 PSI 296-324 kPa	

Ground pressure specifications vary based on tire pressure, tire rating, and soil conditions. Figures for comparative purposes only.

SCRAPER TELEMATICS **NEW**



THE FOUNDATION FOR THE FUTURE OF K-TEC'S SCRAPER TELEMATICS HAS ARRIVED!

K-Tec's Telematic system beams key earthmoving performance indicators from the jobsite to the cloud, for a software dashboard accessible to contractors for assessing the information needed to make the smartest business decisions for a Massive Advantage in earthmoving.



SCAN QR TO
WATCH VIDEO

Connect to the telematics dashboard on your tablet, mobile, or computer

The K-Tec Telematics hardware kit includes a black box, global SIM, shark fin antenna and wiring to connect to the onboard computer.

K-Tec is excited to roll out telematics to both ADT and Direct Mount Scraper lines. Additionally, we are preparing a retrofit kit offering telematics for all older K-Tec scraper models.

Currently, K-Tec is beta testing scraper telematics around the world in USA, Canada, Australia, and Japan.

K-Tec invites all interested contractors to collaborate by providing feedback for future development for ideal solutions in scraper telemetry.

Please visit www.ktec.com for more information on joining K-Tec's ongoing journey of telematics in the earthmoving industry.

K-TEC SCRAPER SPECIFICATIONS

IMPERIAL

Specifications	1228 ADT	1237 ADT	1243 ADT	1263 ADT	1237 ADT Train
Heaped Capacity (ISO)	28 cubic yards	37 cubic yards	43 cubic yards	63 cubic yards	74 cubic yards
Struck Capacity	18.5 cubic yards	20.25 cubic yards	25.7 cubic yards	41.3 cubic yards	40.5 cubic yards
Max Load Rating	68,000 lb	88,000 lb	103,200 lb	151,200 lb	176,000 lb
Bucket Dimensions	12' W x 4' H x 11' L	12' W x 4' 3" H x 12' 10" L	12' W x 5' H x 13' 5" L	12' W x 7' H x 15' 11" L	12' W x 4' 3" H x 12' 10" L
Cutting Width	12'	12'	12'	12'	12'
Cutting Edge	3-Piece Blade	3-Piece Blade	3-Piece Blade	3-Piece Blade	3-Piece Blade
Gate Opening	6' 6"	6' 8"	6'	8'	6' 8"
Turning Radius	30'	30'	30'	30'	33'
Gate Cylinders	4.5" x 26.5"	5" x 26"	4.5" x 26.5"	6.5" x 36"	5" x 26"
Lift Cylinders	5.5" x 32"	5.5" x 32"	5.5" x 38"	7.5" x 41"	5.5" x 32"
Ejector Cylinder	5.5" x 76"	5.5" x 76"	5.5" x 76"	6" x 88" (2)	5.5" x 76"
Cutting Edge Clearance	28"	28"	27.5"	30"	28"
Ball to Rear Axle Length	27' 6"	28' 9"	31' 9"	35'	28' 9"
Rack Height (Tiltable)	3'	4'	3' 9"	4' 6"	4'
Weight Distribution	30% Hitch, 70% Scraper Axle	30% Hitch, 70% Scraper Axle	28% Hitch, 72% Scraper Axle	32% Hitch, 68% Scraper Axle	30% Hitch, 70% Scraper Axle
4 Tires	23.5 R25 Radial	26.5 R25 Radial	29.5 R25 Radial	29.5 R25 Radial	26.5 R25 Radial (8 Tires)
Horsepower Required	313HP +	400 HP +	450 HP +	450 HP +	450 HP +
Mud Scraper & Rock Picks	Standard	Standard	Standard	Standard	Standard
Gate Extension	N/A	Standard	N/A	N/A	Standard
Lead Scraper Structural Pkg.	N/A	N/A	N/A	N/A	Tie Rods, Tail Hitch, Rack Ext.
Truck Fender & Catwalk System	Standard	Standard	Standard	Standard	Standard

Optional Features

Radial Tires	1050/50 R32 (2)	N/A	29.5 R29, 24 R35 (4)	29.5 R29, 24 R35 (4)	N/A
4 Caliper Disc System	Optional	Optional	Optional	Optional	Optional
Rack Extension	N/A	Optional	N/A	N/A	Standard on Lead
Trash Rack	Optional	N/A	N/A	N/A	N/A
Height Gauge	N/A	Optional	N/A	N/A	Optional
Mine Version	N/A	Optional	N/A	N/A	Optional
Salt Harvesting Package	N/A	Optional	N/A	N/A	Optional

Transportation Dimensions

Overall Width	14'	14'	14'	14'	14'
Overall Height	9' 1"	10'	10' 11"	10' 4"	11' 1", 10'
Overall Length	34' 7"	36' 6"	40' 2"	44'	36' 6", 36' 6"
Shipping Weight	32,744 lb	39,130 lb	49,450 lb	61,000 lb	41,570 lb, 39,130 lb
Overseas Shipping	Roll-on Roll-off	40' Highcube container	40' Highcube container	40' Highcube container	40' Highcube container (2)

METRIC

Specifications	1228 ADT	1237 ADT	1243 ADT	1263 ADT	1237 ADT Train
Heaped Capacity (ISO)	21.4 cubic metres	28.28 cubic metres	32.88 cubic metres	48.2 cubic metres	56.57 cubic metres
Struck Capacity	14.1 cubic metres	15.5 cubic metres	19.65 cubic metres	31.56 cubic metres	30.9 cubic metres
Max Load Rating	30,844 kg	39,916 kg	46,810 kg	68,583 kg	79,832 kg
Bucket Dimensions	3.66 m W x 1.22 m H x 3.35 m L	3.66 m W x 1.29 m H x 3.91 m L	3.66 m W 1.52 m H x 3.84 m L	3.66 m W x 2.13 m H x 4.85 m L	3.66 m W x 1.29 m H x 3.91 m L
Cutting Width	3.66 m	3.66 m	3.66 m	3.66 m	3.66 m
Cutting Edge	3-Piece Blade	3-Piece Blade	3-Piece Blade	3-Piece Blade	3-Piece Blade
Gate Opening	1.98 m	2.03 m	1.83 m	2.4 m	2.03 m
Turning Radius	9.1 m	9.1 m	9.1 m	9.1 m	10 m
Gate Cylinders	114 mm x 673 mm	127 mm x 711 mm	152 mm x 660 mm	165 mm x 914 mm	127 mm x 660 mm
Lift Cylinders	140 mm x 813 mm	140 mm x 813 mm	152 mm x 965 mm	190 mm x 1,041 mm	140 mm x 813 mm
Ejector Cylinder	140 mm x 1,930 mm	140 mm x 1,930 mm	152 mm x 1,930 mm	152 mm x 2,235 mm (2)	140 mm x 1,930 mm
Cutting Edge Clearance	0.71 m	0.71 m	0.69 m	0.76 m	0.71 m
Ball to Rear Axle Length	8.38 m	8.77 m	9.69 m	10.6 m	8.77 m
Rack Height (Tilttable)	0.91 m	1.22 m	1.14 m	1.37 m	1.22 m
Weight Distribution	30% Hitch, 70% Scraper Axle	30% Hitch, 70% Scraper Axle	28% Hitch, 72% Scraper Axle	32% Hitch, 68% Scraper Axle	30% Hitch, 70% Scraper Axle
4 Tires	23.5 R25 Radial	26.5 R25 Radial	29.5 R25 Radial	29.5 R25 Radial	26.5 R25 Radial (8 Tires)
Horsepower Required	230 kW +	294 kW +	330 kW +	330 kW +	330 kW +
Mud Scraper & Rock Picks	Standard	Standard	Standard	Standard	Standard
Gate Extension	N/A	Standard	N/A	N/A	Standard
Lead Scraper Structural Pkg.	N/A	N/A	N/A	N/A	Tie Rods, Tail Hitch, Rack Ext.
Truck Fender & Catwalk System	Standard	Standard	Standard	Standard	Standard

Optional Features

Radial Tires	1050/50 R32 (2)	N/A	29.5 R29, 24 R35 (4)	29.5 R29, 24 R35 (4)	N/A
4 Caliper Disc System	Optional	Optional	Optional	Optional	Optional
Rack Extension	N/A	Optional	N/A	N/A	Standard on Lead
Trash Rack	Optional	N/A	N/A	N/A	N/A
Height Gauge	N/A	Optional	N/A	N/A	Optional
Mine Version	N/A	Optional	N/A	N/A	Optional
Salt Harvesting Package	N/A	Optional	N/A	N/A	Optional

Transportation Dimensions

Overall Width	4.27 m	4.27 m	4.27 m	4.27 m	4.27 m
Overall Height	2.77 m	3.04	3.34 m	3.15 m	3.4 m, 3.04 m
Overall Length	10.55 m	11.13 m	12.25 m	13.4 m	11.13 m, 11.13 m
Shipping Weight	14,853 kg	17,749 kg	22,430 kg	27,699 kg	18,855 kg, 17,749 kg
Overseas Shipping	Roll-on Roll-off	40' Highcube container	40' Highcube container	40' Highcube container	40' Highcube container (2)

K-TEC LEVELER SPECIFICATIONS

IMPERIAL

Specifications	1411 Flex	1613 Flex	1814 Flex	2016 Flex	2822 Flex
Capacity	11.4 cubic yards	13 cubic yards	14.6 cubic yards	16.3 cubic yards	22.8 cubic yards
Bucket Dimensions	14' W x 5' 1" H x 4' 7" L	16' W x 5' 1" H x 4' 7" L	18' W x 5' 1" H x 4' 7" L	20' W x 5' 1" H x 4' 7" L	28' W x 5' 1" H x 4' 7" L
Cutting Width	14'	16'	18'	20'	28'
Single Simplistic Tilt	Standard	Standard	Standard	Standard	Standard
Depth Level Gauge	Standard	Standard	Standard	Standard	Standard
GPS/Laser Adaptability	Standard	Standard	Standard	Standard	Standard
Mechanical Slopometer	Optional	Optional	Optional	Optional	Optional
Manual Transport NEW	N/A	Optional	Optional	Optional	Standard
LED Lights	Optional	Optional	Optional	Optional	Standard
Rear Hitch	Optional	Optional	Optional	Optional	Optional
Tires	385/65 R22.5 (4)	385/65 R22.5 (4)	385/65 R22.5 (4)	385/65 R22.5 (4)	385/65 R22.5 (7)

Blade Configurations

8" Curved Grader Blade

Straight Flat Cutting Edge

Serrated Cutting Edge

Hydraulic Configurations

1/2" Tips

3/4" Tips

Transportation Dimensions

Overall Width	14' 3"	16' 3"	18' 3"	20' 3"	28' 8"
Overall Length	25'	25'	25'	25'	31' 3"
Folded Dimensions	8' 6" W x 10' 6" H x 22' L	8' 6" W x 10' 6" H x 23' L	8' 6" W x 10' 6" H x 24' L	8' 6" W x 10' 6" H x 25' L	10' 5" W x 10' 7" H x 35' L
Shipping Weight	10,200 lb	10,670 lb	11,128 lb	11,594 lb	21,354 lb
Overseas Shipping	40' Highcube container	40' Highcube container	40' Highcube container	40' Highcube container	40' Highcube container

METRIC

Specifications	1411 Flex	1613 Flex	1814 Flex	2016 Flex	2822 Flex
Heaped Capacity (ISO)	8.4 cubic metres	9.9 cubic metres	11.1 cubic metres	12.4 cubic metres	17.4 cubic metres
Bucket Dimensions	4.26 m W x 1.5 m H x 1.4 m L	4.9 m W x 1.5 m H x 1.4 m L	5.4 m W x 1.5 m H x 1.4 m L	6.1 m W x 1.5 m H x 1.4 m L	8.5 m W x 1.5 m H x 1.4 m L
Cutting Width	4.26 m	4.9 m	5.5 m	6.1 m	8.53 m
Wrap Around Mud Scrapers	Standard	Standard	Standard	Standard	Standard
Depth Level Gauge	Standard	Standard	Standard	Standard	Standard
GPS/Laser Adaptability	Standard	Standard	Standard	Standard	Standard
Mechanical Slopometer	Optional	Optional	Optional	Optional	Optional
Manual Transport NEW	N/A	Optional	Optional	Optional	Standard
LED Lights	Optional	Optional	Optional	Optional	Standard
Rear Hitch	Optional	Optional	Optional	Optional	Optional
Tires	385/65 R22.5 (4)	385/65 R22.5 (4)	385/65 R22.5 (4)	385/65 R22.5 (4)	385/65 R22.5 (6)

Blade Configurations

203 mm Curved Grader Blade

Straight Flat Cutting Edge

Serrated Cutting Edge

Hydraulic Configurations

12.7 mm Tips

19 mm Tips

Transportation Dimensions

Overall Width	4.34 m	4.95 m	5.56 m	6.17 m	8.74 m
Overall Length	7.62 m	7.62 m	7.62 m	7.62 m	9.52 m
Folded Dimensions	2.59 m W x 3.2 m H x 6.7 m L	2.59 m W x 3.2 m H x 7 m L	2.59 m W x 3.2 m H x 7.31 m L	2.59 m W x 3.2 m H x 7.62 m L	3.1 m W x 3.22 m H x 10.7 m L
Shipping Weight	4,626 kg	4,839 kg	5,047 kg	5,258 kg	9,686 kg
Overseas Shipping	40' Highcube container	40' Highcube container	40' Highcube container	40' Highcube container	40' Highcube container



NOTES:



CONTACT US

PHONE

+1 204 746 6435

+1 866 496 7561

ADDRESS

164 2nd Ave East,
Box 257, Rosenort,
MB, Canada, R0G 1W0

EMAIL

sales@ktec.com

WEB

www.ktec.com



MASSIVE ADVANTAGE