

QUALITY OFF-HIGHWAY VEHICLES

**Rimpull**  
CORPORATION

**Dart**  
Truck



# Rimpull strives to produce the best off-highway vehicles for the best value.

Rimpull Corporation is a manufacturer of custom haulage vehicles for the mining and arctic field industries. We focus on providing and supporting quality-assembled, high-performance vehicles and products. Our formula for success is built on financial stability, innovative design, trust and personal attention to each customer's application and technical needs. Our highly experienced engineers and service technicians are dedicated to our customers, offering personalized service with responsive parts and technical service support.

Our strategic vision is to produce simple, safe, durable, reliable off-highway vehicles and parts for providing long-term value.

For 50 years, Rimpull has been a proud leader in off-highway and roadless, remote area vehicles. From our 67-acre corporate plant in Olathe, Kansas, we have engineered and produced a standard of excellence through quality manufacturing and support services.



# HIGHLIGHTS IN 50 YEARS OF BUSINESS



**1975**

Rimpull manufactures its first fleet of model CW-150 bottom-dump-coal haulers.



**1978**

Rimpull delivers the world's first 120-ton mechanical drive rear-dump fleet.



**1995**

Rimpull delivers its first fleet of CW-200 bottom-dump coal vehicles.



**2005**

Rimpull manufactures its first Dart Model 5140B 420-ton salt trailer-train vehicle.



**2010**

Rimpull delivers RT-30 10x10 Roadless 30-ton hauler to Canadian Arctic for gold mining exploration.



**2013**

Rimpull delivers 5140C 420-ton salt trailer-train vehicles to Russia.



**2015**

Rimpull produces 5225C salt trailer-train rated at 450-tons payload.

**1971**

Rimpull Corporation is founded in Kansas City, Missouri. Moves to its 67-acre plant site in Olathe, Kansas, in 1974.



**1977**

Rimpull manufactures its first fleet of 100-ton rated mechanical-drive rear-dumps.



**1990**

Rimpull delivers first 270-ton bottom-dump trailer-train coal hauler fleet and the first 280-ton capacity tractor-trailer vehicles.



**2007**

Rimpull delivers its first fleet of RT-40T roadless tundra tractor-trailer haulers to Alaska's North Slope.



**2012**

Rimpull adds the Dart 3100B 100-ton class rear-dump. It also becomes the tractor for the new Dart 160-175-ton capacity tractor-trailer bottom-dump haulers.



**2014**

Rimpull delivers Roadless Transport RT-20 10x10 Utility Vehicle to a North Slope oil industry leader.



**2019**

Rimpull designs, manufactures, and commissions the first ever SH1000 salt harvesting machine.



**2021**

Rimpull proudly celebrates its 50th year in business.

# OFF-HIGHWAY VEHICLES

## Designed to Meet Mine-Site-Specific Applications.

Rimpull has been a tractor-trailer bottom-dump specialist since 1971. Our off-highway vehicles are custom manufactured specifically to the client's mining needs.

Rimpull's "site-specific" engineering services will design the right vehicle to fit your mining application.



## Simple. Safe. Durable. Reliable.

Rimpull's vehicles are easy to maintain and built to last.

## Engineered to Meet Application.

Control operating cost per hour with an optimized vehicle from tire size to load size - the details matter.

## 85 to 450-ton Payload Size Range.

You choose the right size vehicle for your mining needs.

## State-of-the-Art Technology.

Our vehicles are equipped with the latest tier compliant power trains and control systems.



## Fleet Renewal

Our fleet renewal program offers recertification of existing vehicles with custom remanufacturing options for various models. Choose the customized features and upgrades to renew your fleet to like-new condition with maximum ROI benefits.

Economic justification for the fleet renewal over a 2 to 3 year payback period is based on the combined factors of increased fleet productivity, increased vehicle operating availability, reduced vehicle annual maintenance costs, and personnel savings from reduced fleet size.

## The Benefits of Fleet Renewal

- Vehicle performance is increased with upgraded, modern tier-compliant power trains and increased payload capacities.
- Vehicle reliability is on par with new vehicles and warrantied the same.
- The result from increased productivity and decreased operating costs may yield a return on investment of 1.5 to double that of purchasing new vehicles at current costs.

## Highlights of Rimpulls Recertification of a Dart Truck

- Updated and Recertified Frame.
- New Updated Cummins Engine, Remanufactured / Upgraded Allison Transmission.
- Replaced Wiring, Hosing, Air Induction Intakes and Exhaust Systems.
- Recertification or Remanufactured Steer/Drive Axles. Updated Steer/Drive Suspensions.
- New State-of-the-Art Cab and Deck Assembly. New Decking and Sheet Metal.
- All New Boarding Ladders and Safety Equipment.



# COMPONENTS AND PARTS

## Rimpull Offers Solutions to your Parts and Components needs.

- Major machine components are engineered and designed to last. Rimpull is happy to assist with your varying component needs (transmissions, axles, brakes, cabs, differentials, trailer hitches and hitch balls).
- Everyday replacement parts are easy to order and receive from Rimpull Corporation. Everything from OEM to aftermarket, we will help you find a solution.

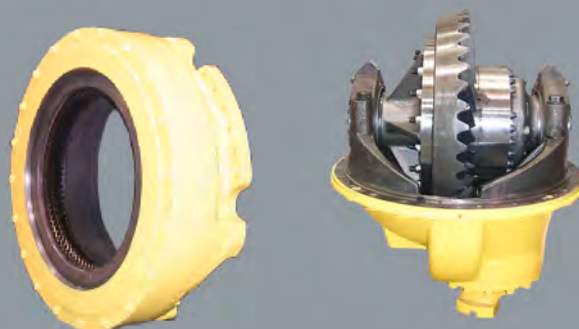
### Axles

- Rimpull produces a wide variety of axle configurations to meet a wide range of off-highway applications.
- Axles built with cast steel wheels and forged steel stub ends.



### Brakes

- Rimpull services and supplies dry and wet brakes.
- Friction disk, drum, parking brakes, brake linings.
- Remanufacturing and rebuilding of assemblies.



### Differentials / Planetaries

- Upgraded and improved differentials, planetaries or complete drive axles are made with the highest quality gears and bearings.



### Ball and Hitch

- Trailer ball / hitch mounting can be engineered to fit many different applications.
- 12", 18", 20" and 23" ball hitch assemblies available.
- Conversion of existing pin hitches to ball hitches for maintenance free life.

### Cabs

- Rimpull produces, remanufactures, and rebuilds State-Of-The-Art vehicle cabs that integrate all current technologies.
- Digital displays and switches. Custom dash panel layouts.
- Heated, cooled and pressurized cabs for operator comfort and safety.



### Miscellaneous Parts

- |            |              |           |                  |
|------------|--------------|-----------|------------------|
| • Gears    | • Drivelines | • Linings | • Bushings       |
| • Pumps    | • LED lights | • Flanges | • Pins           |
| • Motors   | • HID lights | • Valves  | • Grid Resistors |
| • Bearings | • Cylinders  | • Ladders | • Contact Tips   |
| • Seals    | • O-Rings    | • Seats   | • Brushes        |



# TRAILERS

## Third Generation Trailer Assemblies and Prime Mover Conversions.

We custom design trailer bodies for site-specific coal, salt, ore and dirt operations. Rimpull trailers utilize appropriate dry or wet disc brakes, along with our 12," 18," 20" or 23" ball hitch assemblies.

In addition to manufacturing trailer assemblies for Rimpull and Dart trucks, we also perform complete conversions of other prime movers, from end-dump to tractor-trailer applications. Services include:

- Trailer Body Customized to Fit with Prime Mover.
- Trailer Designed to Match Primary Loading Equipment.
- Trailer Axle Assemblies Designed for Customer Tire Sizes.
- Tractor-Trailer Ball Hitch Assembly.
- Rear Fenders, Decks, Access Doors, Handrails and Mud Flap Assemblies.
- Turn Arrestor Assembly.
- Systems Conversion - Air, Hydraulic, Braking, and Dump Doors.
- Braking Certifications and Weight Studies.





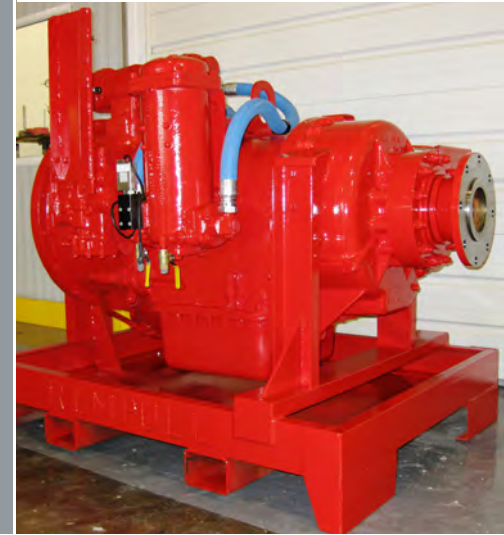
# TRANSMISSION

## Transmission Rebuild and Upgrade Specialists of 6,000 - 8,000 - 9,000 Series

Our transmission program focuses on high-quality assembly using genuine Allison parts and Rimpull designed modifications and upgrades. Each customer's specifications are site-specific in design for maximum operational life and low cost-per-hour performance. All transmissions are tested for several hours at operating temperatures on our 1,000 HP load capable dynamometer.

The benefits of our transmission program include:

- Rimpull Specializes in CEC 3/5 Transmission Conversions.
- Custom Engineered Design and Modifications to Fit Mine Specific Applications.
- Use of Genuine Allison Parts and Rimpull Performance Modifications.
- Quality Removal and Installation of Every Transmission.
- Review and Upgrade of Components to Ensure Overall Life of the Entire Drive Train System.
- Technical Support and Training from an Experienced Team.
- In-pit Review of Haul Roads and Ramp Conditions for Optimized Productivity.

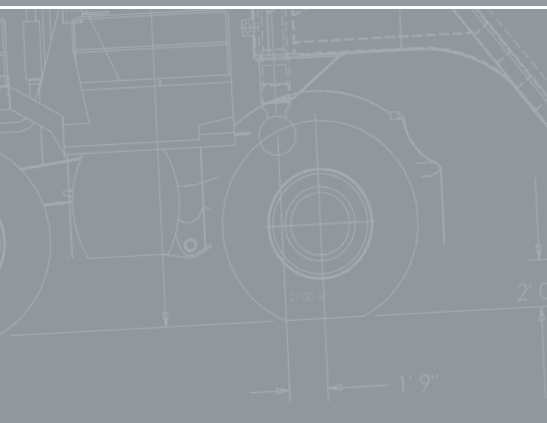


# FIELD SUPPORT

## Rimpull Offers Top-Notch Services and Support in the Field.

We sell directly to customers, not through dealers. This brings efficiency, cost savings, responsiveness and an ability to deliver timely solutions to our customers. We stay in direct contact with our customers, making it easy to identify and respond to customer needs.

Rimpull's policy is to provide products and services that meet the initial and continuing needs and expectations of our customers.



# SH1000 HARVESTER

## RIMPULL SALT HARVESTER

Designed in 2018 for a customer who required an efficient way to load their bottom dump haul trucks. The Rimpull SH1000 Salt Harvester can output 1000 Tons per hour in production of different types of aggregates. Dual side conveyors allow haulage trucks to line up on either side of Harvester to increase production capabilities.



## Engineered To Meet Customers Needs

Different mine sites harvest different types of materials. Rimpull Harvesters will be tailor made to the type and size aggregate being mined.

## Hydraulically Driven Wheels and Components

Machine is driven by hydraulic wheel motors. All lifting and conveyor components are hydraulic PTO pump driven. Mechanical drive train powered harvesters are also available using Cummins engines and Allison transmissions.

## Capacity

Rimpull manufactures various capacity harvesters for site-specific needs.



# Roadless Transport: An Evolutionary Technology.

Rimpull is the world leader in roadless vehicle technology. The vehicle performs as an all - weather "land barge" for remote area haulage over Arctic tundra, snow, ice and sand terrain. Unique features include:

## Top Roller Drive Technology.

Transmits chassis payloads and drive torque to the ground through large-footprint, smooth-tread balloon tires.

## Low Tire Ground-Bearing Pressure.

Ranging from environmentally-friendly ground bearing pressures of 7 to 14 psi, the inflation of each tire is operator controlled to selectively provide up to 50 percent more ground contact area giving more traction when it's required.

## Environmentally Compliant.

Powertrain meets modern Tier 4 environmental and J1939 standards.

## All-Weather Durability.

Reliable operation in -40° ambient temperatures.



## Midwest Branch

EVANSVILLE, INDIANA  
6050 Wedeking Ave. Bldg 8  
Evansville, Indiana 47715  
Office: 812.464.3911  
Fax: 812.464.2717

## Mountain West Branch

GILLETTE, WYOMING  
PO Box 3286, 2800 Elder St.  
Gillette, Wyoming 82718  
Office: 307.682.6500  
Fax: 307.686.0724

## Southern Branch

TYLER, TEXAS  
PO Box 132383  
Tyler, Texas 75713  
Office: 903.534.1600  
Fax: 903.534.1612

## New Mexico Warehouse

MILAN, NEW MEXICO  
1700B Juniper Rd  
Milan, New Mexico

## Corporate Office and Plant

OLATHE, KANSAS  
15600 U.S. 169 South  
Olathe, Kansas 66062  
P.O. Box 748  
Olathe, Kansas 66051  
Office: 913.782.4000  
Fax: 913.782.2651

## Locations Nationwide



## Vehicle Product Line



DART 2085 - 85 TON (77t) PAYLOAD



DART 2110 - 110 TON (99.7t) PAYLOAD



DART 3100B - 100 TON (91t) PAYLOAD



DART 3130B - 130 TON (117.9t) PAYLOAD



DART 4175B - 175 TON (159t) PAYLOAD



DART 4220B - 220 TON (199t) PAYLOAD



DART 5140H/J -  
420 TON (381t) PAYLOAD



DART 5225H/J -  
450 TON (408t) PAYLOAD



PRIME MOVER CONVERSIONS 120 - 300 TON



WT20 - 20,000 GALLON (75,700 L) CAPACITY



WT30 - 30,000 GALLON (113,500 L) CAPACITY



RT20/30 - 10x10 - 20/30 TON (18/27t) PAYLOAD



RT50T - 14x14 - 50 TON (45t) PAYLOAD



RT80 - 10x10 - 80 TON (73t) PAYLOAD



[www.Rimpull.com](http://www.Rimpull.com)